

Middle turbinate mucopyocele: a case report

**José Antônio Pinto¹, Pedro Paulo V. C. Cintra²,
Ana Carla Souza de Marqui³, Delmer J. P. Perfeito³,
Roberto D. P. Ferreira³, Rubens H. da Silva³**

Key words: mucopyocele, middle turbinate,
paranasal sinuses.

Summary

Mucopyocele of the middle turbinate is an uncommon disease. Most mucocoeles are situated in the frontal and/or ethmoid sinuses. In this paper we will describe a mucopyocele of the middle turbinate associated with pansinus disease.

¹ Director, Nucleus of Otorhinolaryngology and Head and Neck Surgery, Sao Paulo.

² Assistant Physician, Nucleus of Otorhinolaryngology and Head and Neck Surgery, Sao Paulo.

³ Resident Physician, Nucleus of Otorhinolaryngology and Head and Neck Surgery, Sao Paulo

Study conducted by the Nucleus of Otorhinolaryngology and Head and Neck Surgery, Sao Paulo, Hospital São Camilo and Hospital Santa Cecília.

Address correspondence to: Dr. José Antônio Pinto – Rua Alameda dos Nhambiquaras 150 Moema São Paulo SP 04090-010

Tel/fax (55 11) 5573-1970 – E-mail: japori@uol.com.br

Article submitted on August 11, 2003. Article accepted on December 04, 2003.

INTRODUCTION

Mucocele is a mucous retention cyst without epithelial lining. It occurs when a mucocyst becomes infected¹. Most mucoceles are located in the frontal and anterior ethmoid sinuses and normally they involve the frontal-ethmoid complex, expanding to the superior-medial region of the orbit, leading to ocular disorders; nasal concha presentation is rare. In the present article, the authors described a case of middle concha mucopyocele associated with chronic pansinusitis, possible disease etiologies and the management adopted for the reported case.

LITERATURE REVIEW

Even though it is relatively uncommon, mucopyocele is not rare. Most of them occur in the fronto-ethmoidal complex and expand preferably into the orbit, leading to ocular symptoms. However, middle concha mucopyoceles are rare and the etiology is varied and includes previous nasal surgeries, polyp resection and/or nasal tumors and nasal trauma⁴. The first description of middle concha mucopyoceles was made by Badia et al.¹ in 1994 in a male patient aged 82 years that had been submitted to nasal polyp resection 20 years before, but for 1 year he had started to have nasal obstruction symptoms followed by mucopurulent rhinorrhea on the left with no improvement with clinical treatment (nasal corticoids). Toledano et al.⁸ described a case of middle concha mucopyoceles in a 14-year-old patient that had suffered a nasal trauma as a child and also presented nasal obstruction on the right, followed by mucoid rhinorrhea. Armengot et al.⁹ have also described a case of mucopyoceles in a 65-year-old lady whose main symptom was diplopia with exophthalmia on the left and medial canthus protuberance on the same eye, but without any nasal symptom. CT scan of the nose and paranasal sinuses showed the presence of soft density content in the left middle concha, expansion against the papyraceous membrane and orbit invasion. These patients underwent surgery to open the infected middle concha, drain the purulent material from inside it and complete resolution of the symptoms. The follow-up of these patients lasted up to 18 months, including nose and paranasal sinuses CT scan, showing complete absence of recurrent or residual disease.

CASE REPORT

N. C., 64-year-old Caucasian male patient, resident of Sao Paulo. His main complaint was pain on the left brow region. He reported that 30 days before he had started to feel a pain on the left brow region with conjunctiva hyperemia. He went to the ER and was prescribed an eye drop on the left eye for 4 days. He experienced no improvement, so he went back to the ER complaining of

left palpebral edema, diplopia, visual acuity impairment and frontal to left headache.

He reported that 40 years before, he had had the same symptoms on the right eye and he was medicated and improved. After that time, he started to present nasal obstruction and intermittent greenish nasal discharge, more on the left, and controlled with clinical approach. He did not report hyaline rhinorrhea, sneezing or nasal pruritus. He reported systemic blood pressure (using captopril, hydrochlorothiazide daily). In the ENT examination, we observed palpebral edema and ptosis on the left with present pupil reflex and left conjunctiva hyperemia.

Rhinoscopy: nasal fossa with abundant yellowish rhinorrhea, preventing better visualization of nasal structures; hyperemia and hypertrophy of lower conchae.

Otoscopy: no abnormal findings. We ordered complementary exams: nasal and paranasal sinuses CT scan that revealed left frontal, ethmoidal and maxillary sinuses velamentum with expansion of left middle concha and increase in its density, with no destruction of papyraceous lamina (Figure 1). Considering the diagnosis of mucopyoceles of middle concha and pansinusitis, we indicated endoscopic surgery. The head of middle concha on the left was opened with an incision on its meatal aspect, followed by its resection with moderate drainage of purulent secretion. Next, opening of ethmoidal and frontal sinuses through its natural ostia. In early postoperative care, the patient reported significant improvement of symptoms, and was discharged from hospital with antibiotics and analgesics two days after surgery. Postoperative follow-up (day 7) showed complete improvement of the condition without any nasal symptom.

DISCUSSION

Mucocele is the preferred term for cysts without epithelial layer caused by trauma. When the term is applied for paranasal sinuses mucoceles, it has a different understanding, because almost all mucoceles in this region are real mucous retention cysts with epithelial layer normally caused by obstruction². Other causes are trauma, nasal polyp, nasal tumor⁴ and/or surgeries. Most mucoceles are located in the frontal and ethmoid sinuses, and in them, anterior cells are the most affected ones.

In the formation of mucoceles there is true bone destruction owing to its expansive character that determines bone reabsorption. In previous studies, Lund et al.³ demonstrated that mucocele tissues synthesize more PGE₂ (prostaglandin) than normal tissues. The increase in the capacity of inflammatory tissues to synthesize prostaglandin such as PGE₂ is normally related with level of inflammatory cytokines (interleukin E, tumor necrosis factor, vascular adhesion factor), produced as a result of the inflammation. Such cytokines

may be responsible for the destruction associated with mucocèles, with consequent reabsorption, rarefaction and local bone expansion, facilitating their widening³. This event may be the cause of the bone reabsorption and bone formation areas⁸, observed on the bone walls that surround the mucocèle, in which osteoblastic activity is followed by osteogenesis and sclerosis is alternated with areas of active bone destruction⁶. Mucocèle, thus, would grow by expanding outwards instead of expanding under the effect of the internal pressure, preserving the sinus mucosa.

Middle concha is a bone plate that is placed inferior-medially to the complex of ethmoid air cells and runs along its anterior limit, and it may be airtight (called bullous concha). The first description of bullous concha was made in 1893 by Zuckerkandl⁷. When there is pneumatization of middle concha, there is a large air volume that is enough for its growth, before it may present any symptom. Its pneumatization may occur both anterior and posteriorly, and anteriorly it is potentially prone to the formation of mucopyocèles. The middle concha, in turn, also presents an ostium that connected the air cell lumen with the frontal recess, which may be prone to obstruction caused by local inflammatory edema, or cause obstruction of ethmoidal infundibulum leading to onset of ethmoidal and/or antral disease. Thus, given that it may take a secondary infection to the paranasal sinuses, the bullous middle concha is, therefore, predisposed to the same inflammatory disorders that may occur in any paranasal sinuses, but its prevalence in patients with chronic sinusitis ranges at about 30%⁵.

In the present case, the patient presented chronic rhinosinusitis for many years, and had been clinically treated, but we do not know if appropriately. We then decided for surgery, in which we performed opening of middle concha with drainage of purulent material and resection of meatal aspect, followed by opening of drainage ostium of impaired paranasal sinuses. The patient presented significant improvement at early postoperative care, with complete resolution of the clinical manifestations on postoperative day 7.

CT scan and MRI (Magnetic Resonance Imaging) support the diagnosis because they are high resolution exams, allowing differential diagnosis with cysts, expansive masses, erosive lesions, secretion, benign tumors (polyps, papillomas). In this case, paranasal sinuses CT scan allowed the distinction between damage and paranasal sinuses secretion. CT scan showed that apparently it was a non-vascularized lesion, without brain impairment and located on the left middle meatus (Figure 2). Despite the intraoperative confirmation of benign lesion, it is mandatory to perform a histopathological exam to confirm the diagnosis.

CONCLUSION

Even though middle concha mucopyocèle is an infrequent entity, it should be part of the differential diagnosis in cases of rhinosinusopathy with dissatisfactory resolution and in intranasal masses and tumors. Paranasal sinuses CT scans are very important for the diagnosis and in some cases, MRI with gadolinium contrast is also recommended to reach better delineation of the lesion and to distinguish expansive processes of the nose, paranasal sinuses or even cerebral lesions. After confirmation of the diagnosis, endoscopic surgical treatment produces very satisfactory outcomes. In the presence of concomitant

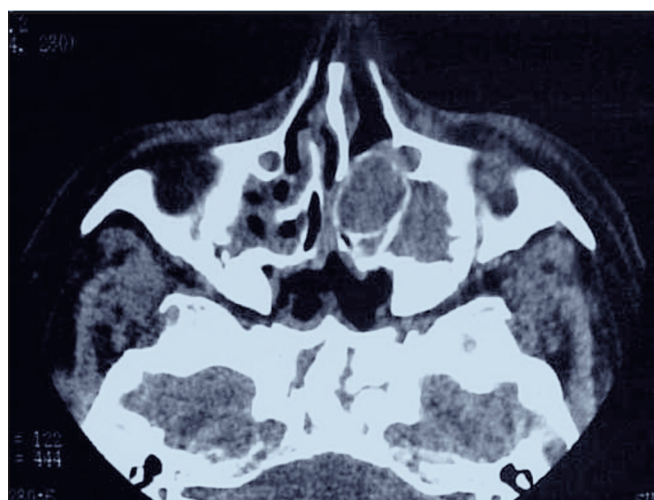


Figure 1. Paranasal sinuses CT scan (axial section) showing pansinusitis and mucopyocèle of left middle concha.

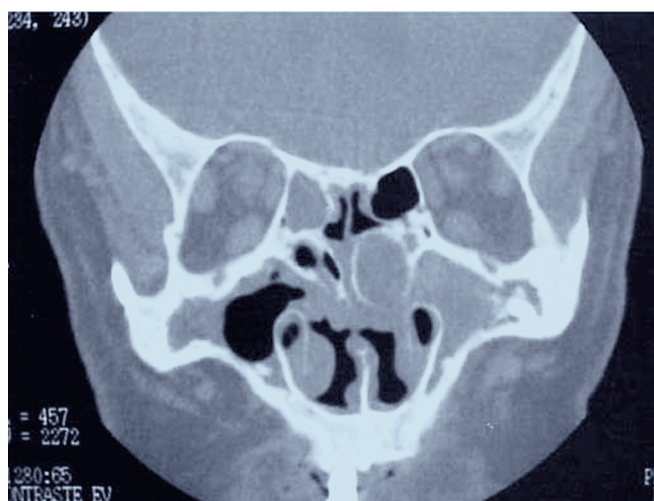


Figure 2. Paranasal sinuses CT scan (coronal section) showing mucopyocèle located in the left middle concha.

paranasal sinuses diseases, such cases should also be surgically treated.

REFERENCES

1. Badia L, Parikh A, Brookes BG. Pyocele of the middle turbinate. *The Journal of Laryngology and Otology* 1994; 108: 783-4.
2. Hellquist HB. Pathology of the nose and Paranasal Sinuses. ch 2, London: Butterworths. p. 17-20.
3. Lund VJ, Henderson B, Yu Song. Involvement of Cytokines and Vascular Adhesion Receptors in the Pathology of Fronto-Ethmoidal Mucocoeles. *Acta Otolaryngology* 1993; 113: 540-6.
4. Harrison DFN, Lund VJ. Conditions Simulating Neoplasia. Tumors of the Upper Jaw; ch4. London: Churchill Living Stone; p. 54-62.
5. Clark ST, Babin RW, Salazar J. The incidence of concha bullosa and its relationship to chronic sinonasal disease. *Am J Rhinol* 1989; 3: 11-2.
6. Lund VJ. Physiopathologie des mucocoeles. *Cah Otorhinolaryngol* 1996; 21: 407-11.
7. Zuckerkandl E. Die untere sichbeinmuschel (mitther Nasanmuschel), normale und pathologische Anatomie der nasenhohle und ihrer pneumatischen anhang. Bd1, Bd 2. Vienna and Leipzig; 1893.
8. Toledano A, Herráiz C, Mate A, Plaza G, Aparicio JM, De los Santos G, Galindo AN. Mucocoele of the middle turbinate. *Otolaryngol Head Neck Surg* 2002; 126:442-4.
9. Armengot M, Ruiz N, Hostalet P, Basterra J. *Otolaryngol Head Neck Surg* 1999; 121:650-2.